



INTEGRA



SUPPORTED HOUSING

A GATEWAY TO INDEPENDENCE

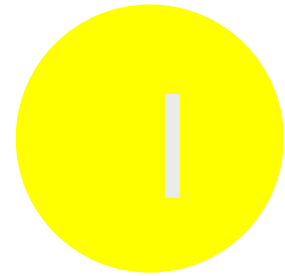


integra supported housing
A Gateway to Independence



integra supported housing

A Gateway to Independence



Integration
back into the
community



Specialist
provider for
forensic
service users



Housing
support
and
services



About Us

Integra Supported Housing is a CQC registered domiciliary care provider for adults with learning disabilities, mental health issues and complex health needs in the Midlands.

Integra Supported Housing was established in 2001 by Jonathan Allen and Janet Turton who have installed their own professional experience as Registered Mental Health Nurses to fulfil their ambition of providing person centred supported for vulnerable adults in the Midlands.

Integra Supported Housing support a wide range of individuals to promote their independence and reengage them into their chosen communities.

We believe that the people we support should be at the centre of what we do to promote inclusion, independence and choice. Our services are individual and person-centred. We believe that our service users have the right to live lives that are meaningful and that the people we support should be encouraged to reach their full potential

Our mental health support services work in accordance to the principles of social inclusion and recovery. We work with people to achieve their goals by offering appropriate support in areas such as training, education, employment and emotional wellbeing. We encourage people to make the most of existing community services and to build effective support networks to produce the best possible outcomes for people. We support people to develop a recovery pathway by exploring and putting into practice effective coping strategies, crisis planning and management tools and collaborative working with the people involved in their care pathway.



integra supported housing
A Gateway to Independence

Referrals To Us

Integra Supported Housing Referral Process.

Your Social worker or representing professional will make a referral to Referrals@integrasupport.co.uk

1

Integra will arrange an assessment and ask for person centered documentation to assess your need and suitability for our service. Properties will be shortlisted that will best meet your needs and you will be supported to attend viewings to promote your choice. Transitional work will commence for staff to get to know you.

2

Tenancy and bills support will be provided in readiness for you move. **COMMUNITY LIVING WITH INTEGRA**

3

4



integra supported housing
A Gateway to Independence



Synergy Project

Working Together Achieves More

The Synergy Project is Integra's Supported Housing work based programme for our service users to get back into work.

We believe that having a disability and mental health diagnosis shouldn't prevent anyone from getting back to work. We work in partnership with our Support Workers, Service users and Professionals to enable placements (via our credit support system). We offer support placements in many different work environments such as gardening, painting and decorating, wood work, cooking, and administration office placements.

Our programmes help to improve social and employability skills, help participants gain confidence and ultimately change lives.

The synergy project is:

positive about volunteering making a difference

caring about the people who work with us

challenging about unfair attitudes in society about learning disability and mental health

inclusive of people from all backgrounds.

If you feel the synergy project would benefit you and would like to know more please contact

Joe Corbett

01902 858131

Joe. Corbett@integrasupport



Working Together Achieves More



integra supported housing
A Gateway to Independence

Our services



Dudley

Walsall



Wolverhampton

Delivering a quality service to you is Integra Supported Housing priority. We monitor the quality of your support and welcome your views on how you think things are going. We will do this by asking you to complete questionnaires, telephoning you or visiting you to ask you for feedback, speaking to your family and professionals involved in your care and support, monitoring complaints and compliments and looking for trends and themes and evaluating whether your outcomes have been achieved.



integra supported housing
A Gateway to Independence

Jonathan Allen

Owner



ABOUT ME

I am the owner of Integra Supported Housing, I have 30 years experience working with individuals with complex learning disabilities and Mental health as a registered manager and a mental health nurse.

My Qualifications include;

- HRC20 trained
- Trained Mental Health Nurse
- MAPA trainer
- First Aid Trainer
- STOPSO



integra supported housing
A Gateway to Independence

Joe Corbett

Service Director



I am the Service Director of Integra Supported Housing. I started within Learning disability and mental health services over ten years ago with my previous roles being that of a Registered Manager and Operations Manager before joining Integra. I have a passion for business development and ensuring that those we support are at the centre of everything we do.

I started with Integra in 2016 as the Service Director and have played a key role in developing Integra into the driven and expanding company we are today.

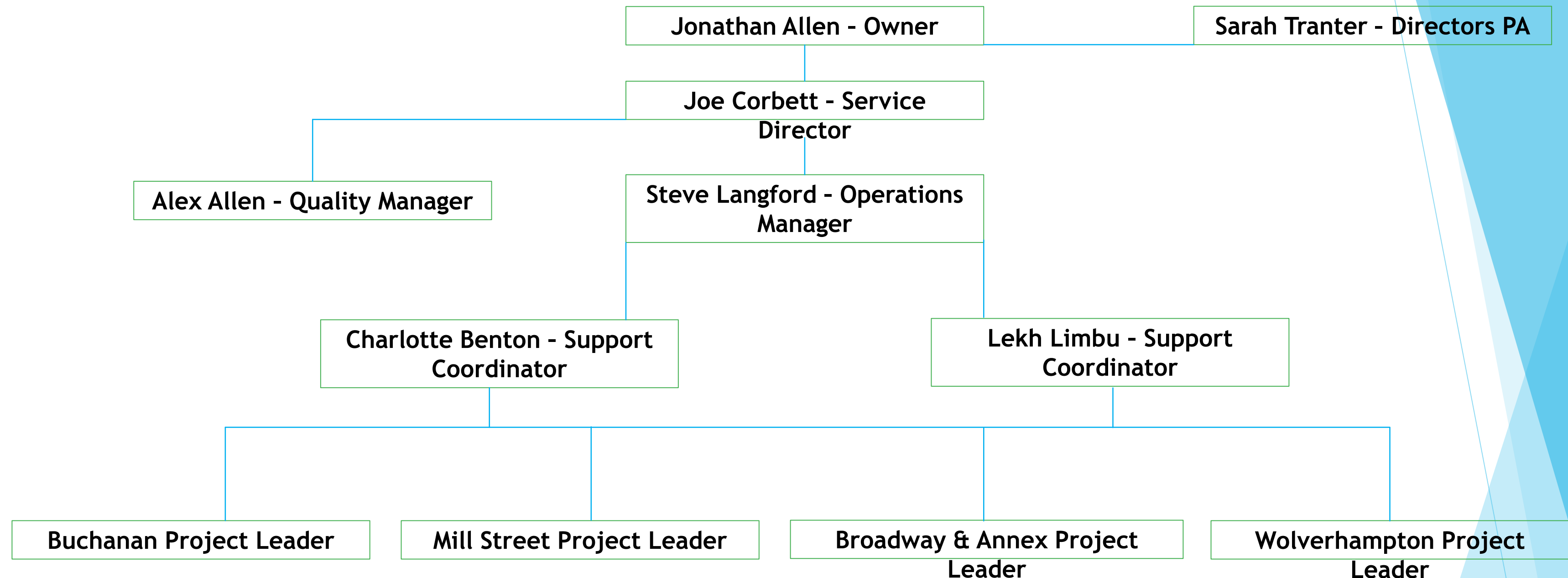
- STOPSO
- QCF level 5 in leadership and management
- HCR20 Trained
- Intensive Interaction Practitioner
- NAS accredited



integra supported housing
A Gateway to Independence

Management team

Walsall & Wolverhampton Service



Key:

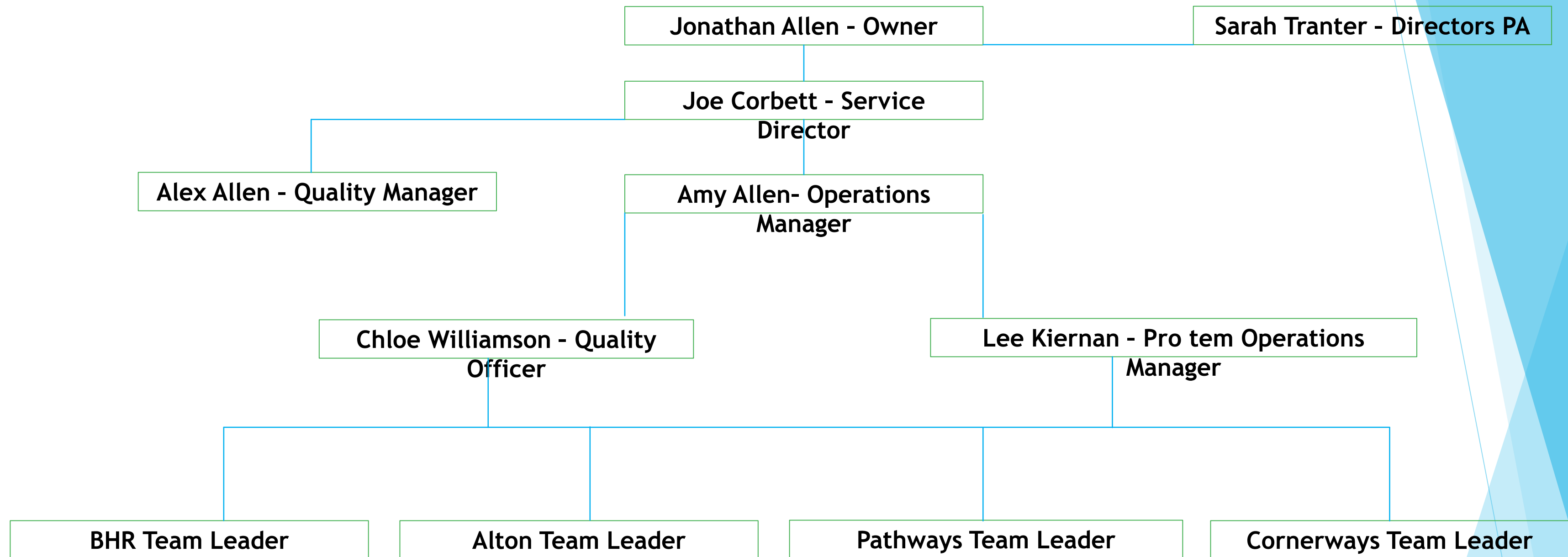
1. Jonathan Allen - Owns Integra Supported Housing. Jonathan has a team of professionals to ensure he is not involved in the day to day operations of Integra. Meetings and Phone calls to be arranged via appointment only through Sarah Tranter - PA to Directors.
2. Joe Corbett - Works directly with the owner of Integra. Main focus is business sustainability, Quality and Development. Joe will be seen when all other avenues have not been productive.
3. Alex Allen - Alex will complete Quality visits to site to ensure all legislation is being met. Alex's Key role is to ensure the organisation has a solid paper trail in line with contracts monitoring an CQC KLOEs to pass any inspections that are carried out on Integra.
4. Steve Langford - Steve is the Operations Manager for Walsall and Wolverhampton. Steve will manage his team of Support Coordinators and Project Leaders to ensure the swift day to day operational running of the service .
5. Lekh Limbu & Charlotte Benton - Both will be support staffs first port of call for supervision, concerns, rotas, annual leave and advice.
6. Project Leaders have 10 hours supernumerary off rota time per week where they will ensure their allocated service is fully stocked and tasks are completed as directed by the Support Coordinators. The rest of their time will be spent manning the on call phone and working on support within their designated service leading by example to ensure the highest quality of support is delivered.



integra supported housing
A Gateway to Independence

Management team

Dudley Service



Key:

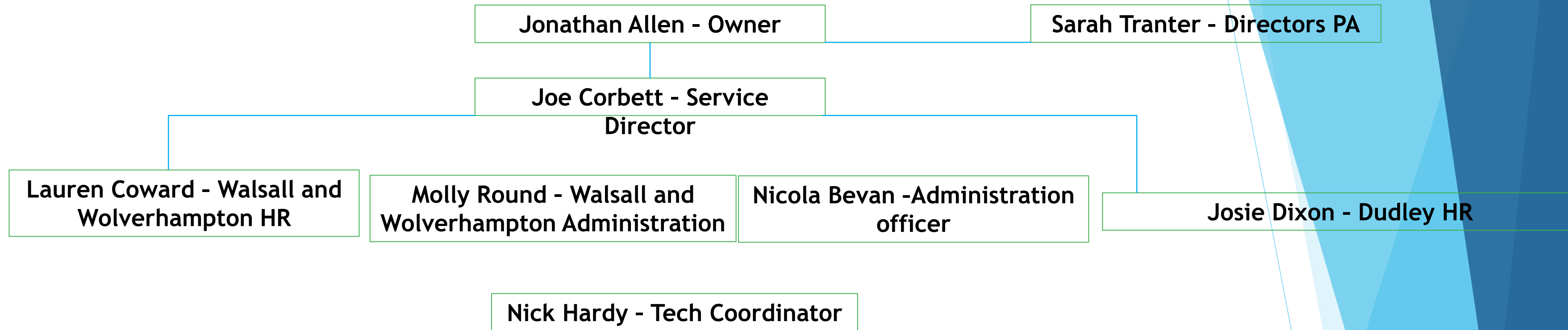
1. Jonathan Allen - Owns Integra Supported Housing. Jonathan has a team of professionals to ensure he is not involved in the day to day operations of Integra. Meetings and Phone calls to be arranged via appointment only through Sarah Tranter - PA to Directors.
2. Joe Corbett - Works directly with the owner of Integra. Main focus is business sustainability, Quality and Development. Joe will be seen when all other avenues have not been productive.
3. Alex Allen - Alex will complete Quality visits to site to ensure all legislation is being met. Alex's Key role is to ensure the organisation has a solid paper trail in line with contracts monitoring an CQC KLOEs to pass any inspections that are carried out on Integra.
4. Amy Allen - Amy is the Operations Manager for Dudley. Amy will manage her team to ensure the swift day to day operational running of the service .
5. Lee Kiernan and Chloe Williamson - Both will be support staffs first port of call for supervision, concerns, rotas, annual leave and advice.
6. Team Leader have 10 hours supernumerary off rota time per week where they will ensure their allocated service is fully stocked and tasks are completed as directed by the Support Coordinators. The rest of their time will be spent manning the on call phone and working on support within their designated service leading by example to ensure the highest quality of support is delivered.



integra supported housing
A Gateway to Independence

Office Structure

Deansgate Office, Tettenhall, Wolverhampton



Key:

1. Jonathan Allen - Owns Integra Supported Housing. Jonathan has a team of professionals to ensure he is not involved in the day to day operations of Integra. Meetings and Phone calls to be arranged via appointment only through Sarah Tranter - PA to Directors.
2. Joe Corbett - Works directly with the owner of Integra. Main focus is business sustainability, Quality and Development. Joe will be seen when all other avenues have not been productive.
3. Lauren Coward - Lauren will ensure that staff compliance is met in line with contracts monitoring, Lauren will take the lead on staff recruitment for the Walsall and Wolverhampton services and ensure due diligence with all HR matters .
4. Josie Dixon - Josie will ensure that staff compliance is met in line with contracts monitoring, Josie will take the lead on staff recruitment for the Dudley service and ensure due diligence with all HR matters .
5. Nicola Bevan - Nicola will responsible for tenancy management, payroll and financial matters.
6. Molly Round - Molly will deal with all administrative tasks within the office for Walsall and Wolverhampton services.
7. Nick Hardy - Nick will manage all of the organisations IT systems and website. Nick will focus on ensuring the organisation is compliant with GDPR and CQC's KLOE 'Use of Technology'.



integra supported housing
A Gateway to Independence

Contact Us



Help

Dudley Borough
01384 288220
Walsall & Wolverhampton
01902 858131



Support

Head Office –
08:30am –
16:30pm
On call – 24/7



Website

www.Integrasupport.co.uk



Email

enquiries@integrasupport.co.uk
referrals@integrasupport.co.uk



Registered Office ;
Integra Supported Housing



62-70 Deansgate Offices



Tettenhall Road
Wolverhampton

WV1 4TH

WV1 4TB – Sat Nav Use



integra supported housing

A Gateway to Independence